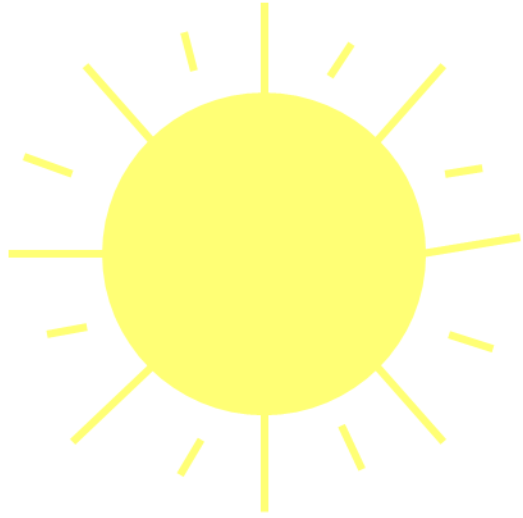


# Say the weather



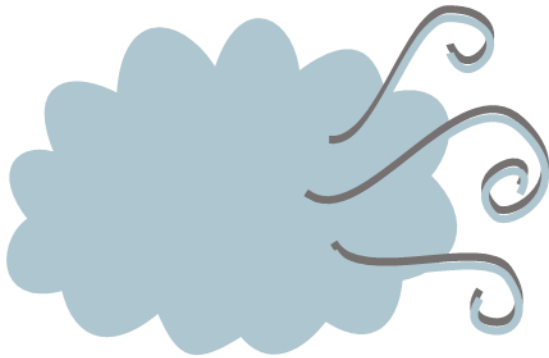
Sunny



Rainy



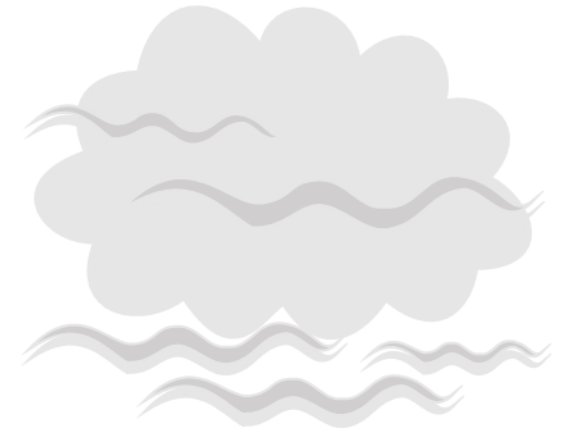
Stormy



Windy

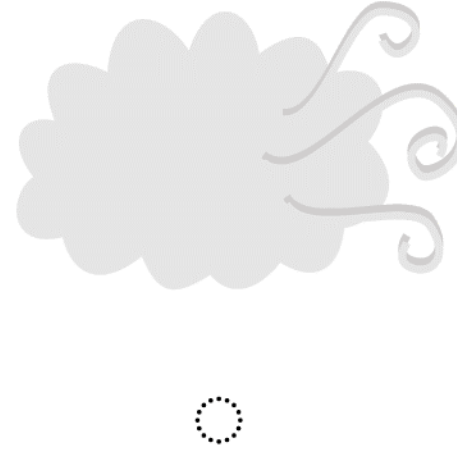
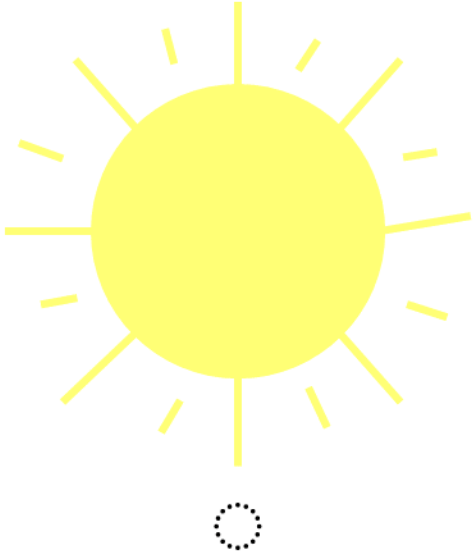


Snowy



Foggy

# Match the Weather



Windy     Sunny     Snowy     Rainy

## Circle the Correct Answer

When the sun is shining, it is \_\_\_\_\_.

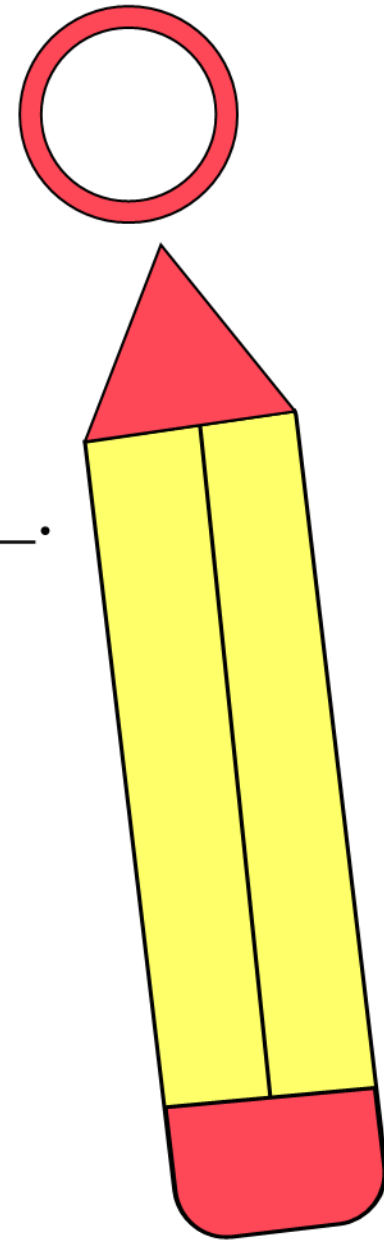
- ▶ rainy
- ▶ sunny
- ▶ windy

When water falls from the sky, it is \_\_\_\_\_.

- ▶ cloudy
- ▶ rainy
- ▶ sunny

When clouds fill the sky, it is \_\_\_\_\_.

- ▶ windy
- ▶ snowy
- ▶ cloudy



## Fill in the Blanks

1. Today is \_\_\_\_\_.
2. I use an umbrella when it is \_\_\_\_\_.
3. The sky is gray when it is \_\_\_\_\_.
4. The trees move when it is \_\_\_\_\_.

### Word Bank

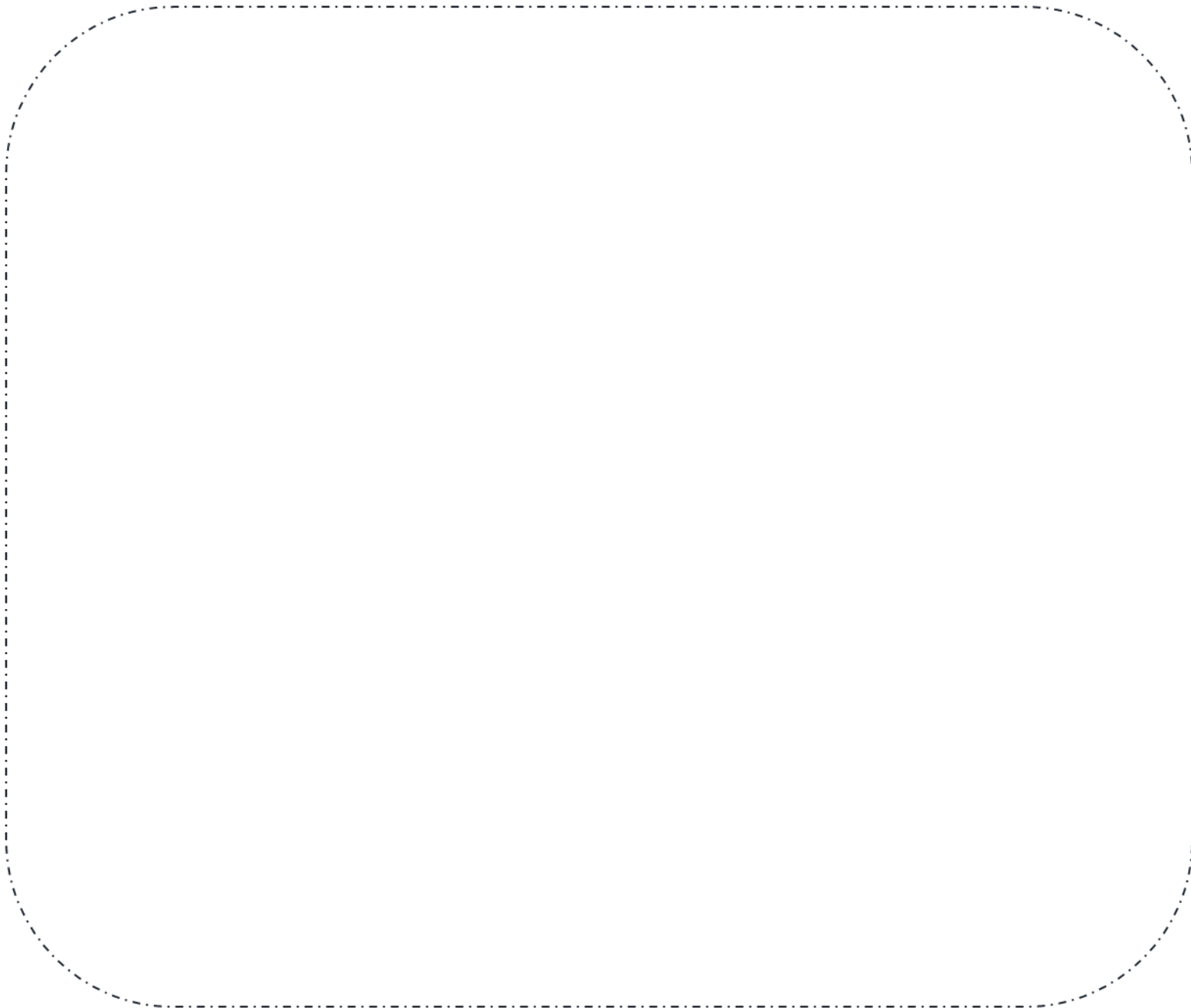
▶ sunny ▶ rainy ▶ cloudy ▶ windy





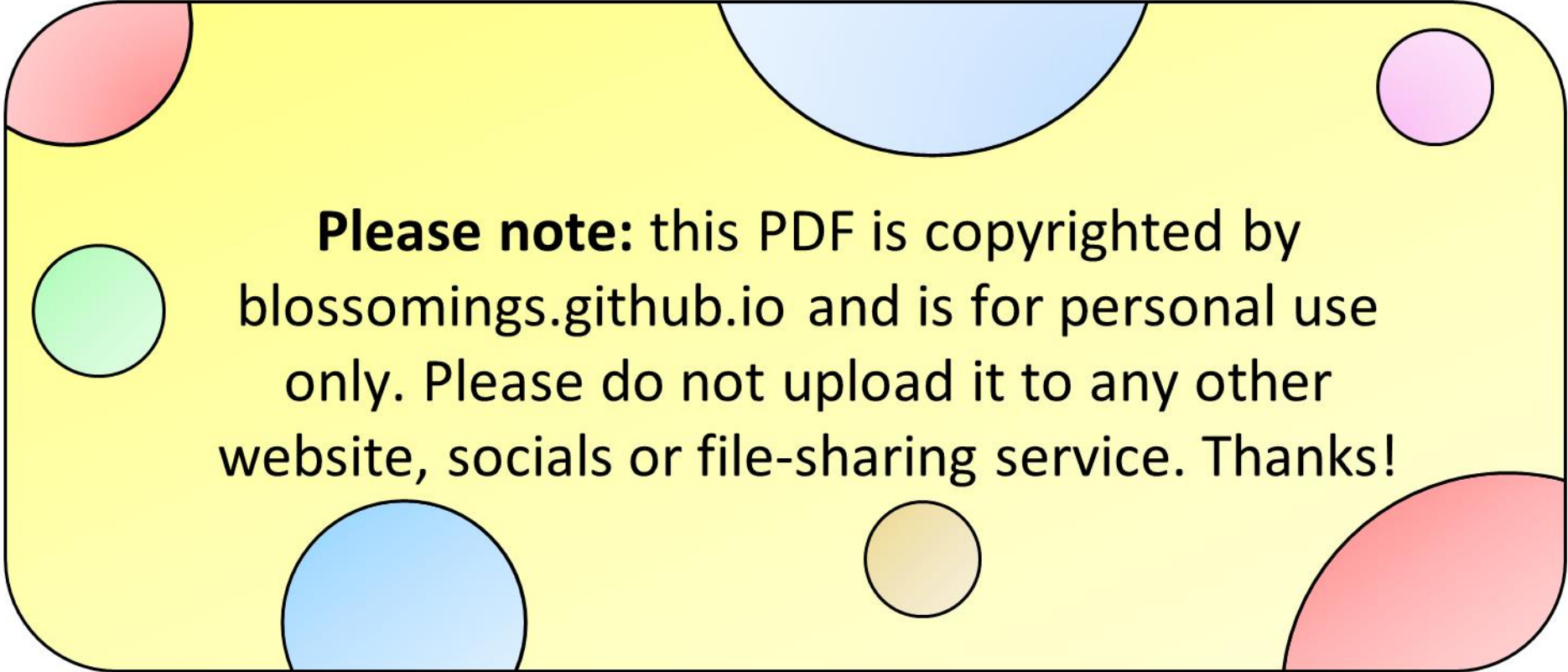
**Draw the weather  
today and say**

▶ Today is \_\_\_\_\_.



# Color Splash

[blossomings.github.io](https://blossomings.github.io)



**Please note:** this PDF is copyrighted by [blossomings.github.io](https://blossomings.github.io) and is for personal use only. Please do not upload it to any other website, socials or file-sharing service. Thanks!